

HYBRID 6200

PART NO.: 1001-6200



www.boremanltd.com

HIGH END LOOKS | HIGH END PERFORMANCE

Unique and Original Boreman Design



New Design
Light Weight Heat Sink



Product Features:

- Unique and Original Boreman Design
- Offering Ultimate Performance with a beautiful Aerodynamic design
- Vacuum - Metalised Reflector - Delivering Extreme Long Range Visibility
- 5 x CREE 11W - Extreme High Power LED's
- Lumens: 6875lm
- Housing: Powder Coated Die Cast Aluminium
- High quality Mounting Brackets
- New Design Light Weight Heat Sink
- Connector: AMP 3 Wire (AMP 282105-1)
- 10 x CREE - 0.42 Watt - Position Light
- ECE R10/R7/R112
- Supplied with Waterproof Connector
- Temperature Range: -40°C ~+50°C
- Current Draw: 6.04 amp@12v & 2.44 amp@24v
- Life Span: 30,000+ hours
- Weight: 1.7 Kilo
- 3 Year Warranty



Metalised Reflector -
Delivering Extreme Long Range Visibility

Information:



Part No.:	Weight:	Housing:	Connector:	Lumens:	Life Span:	
1001-6200	Driving Light	1.7 Kilo	Powder Coated Die Cast Aluminium	Waterproof	6875	30,000+ Hours



Available from your nearest dealer

www.boremanltd.com | info@boremanltd.com | Tel: +353 49 4367049

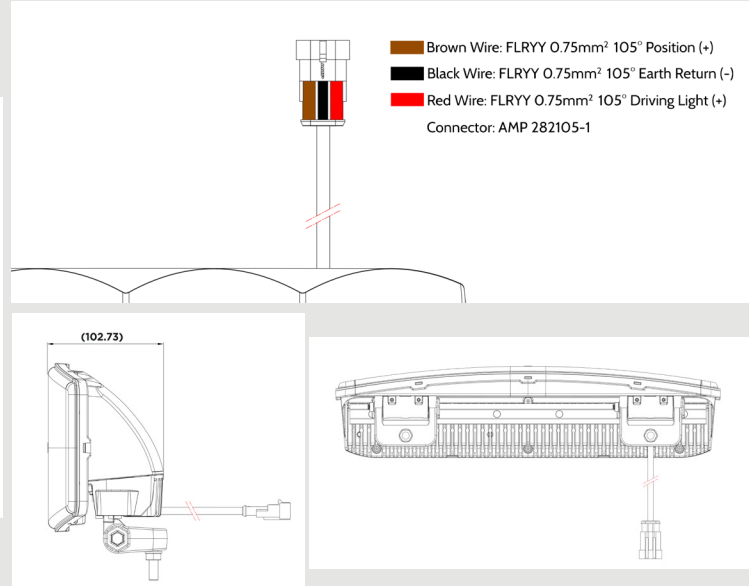
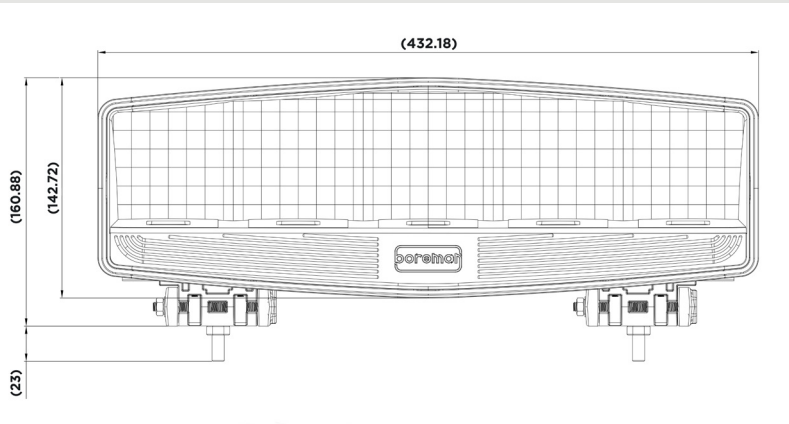
HYBRID 6200

PART NO.: 1001-6200

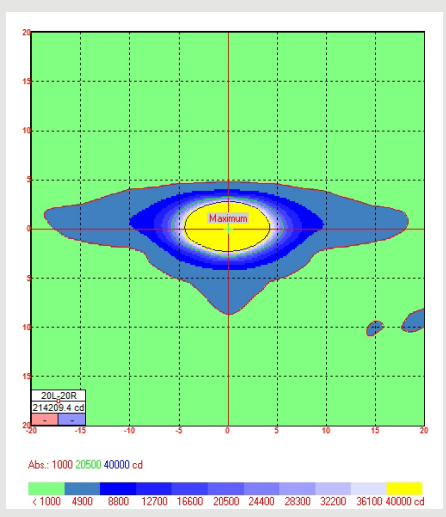


www.boremanltd.com

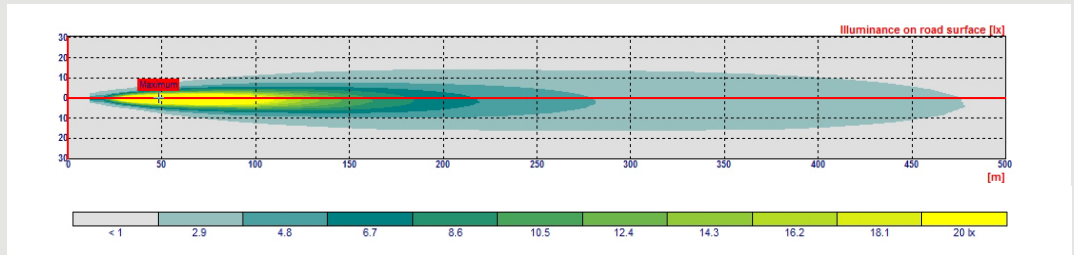
Dimensions:



Beam Pattern:



Light Distribution:



Side and Rear View of Lamp:

